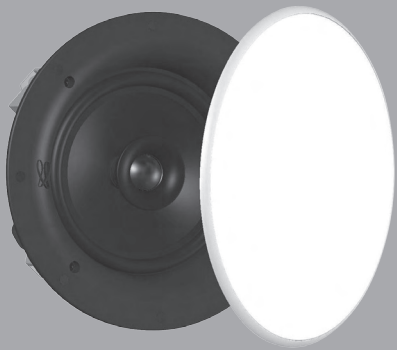
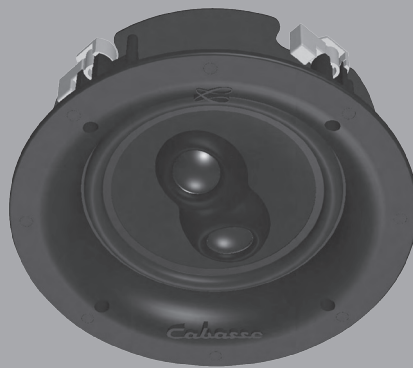


# ARCHIPEL 17 SERIES

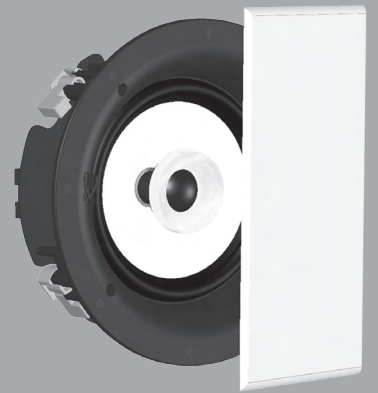
NOTICE D'INSTALLATION DES ENCEINTES ACOUSTIQUES  
LOUDSPEAKERS OWNER'S MANUAL  
BETRIEBSANLEITUNG FÜR LAUTSPRECHERBOXEN



ARCHIPEL 17ICP



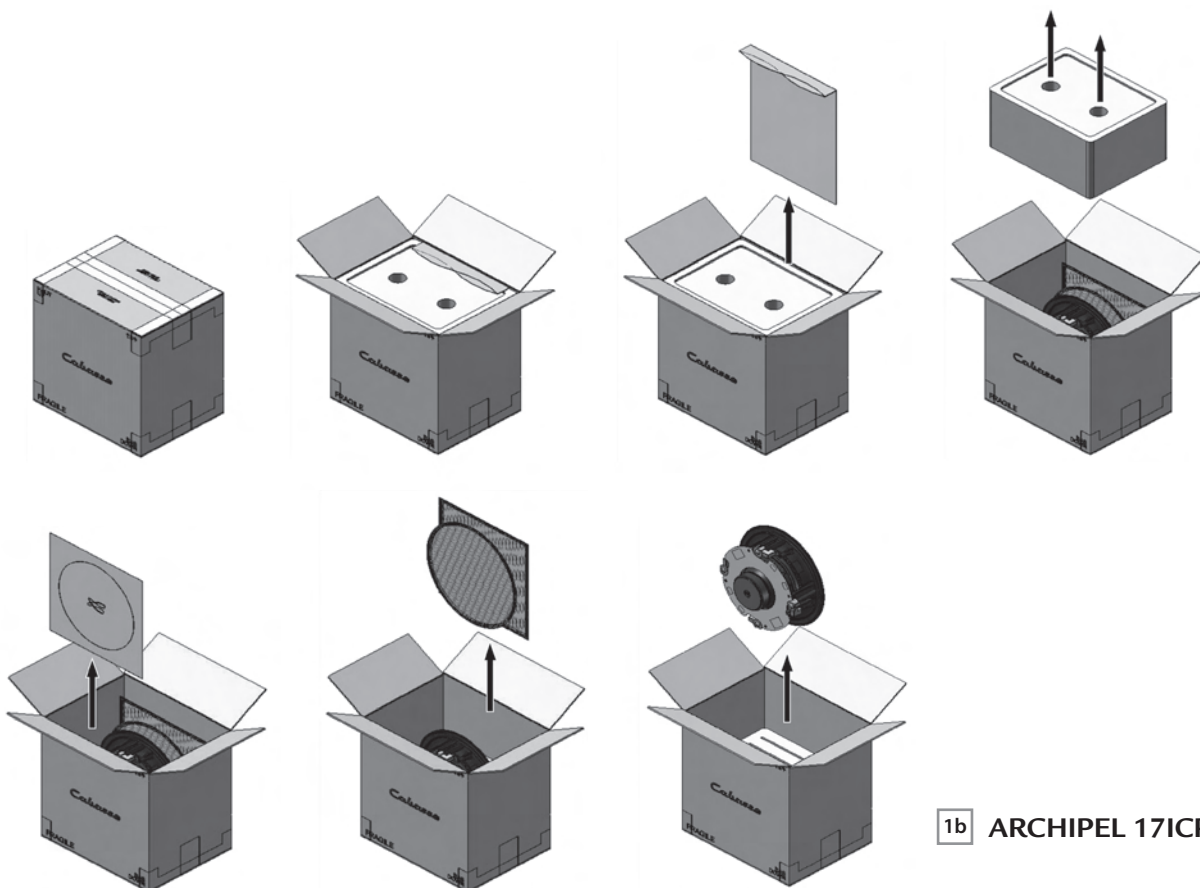
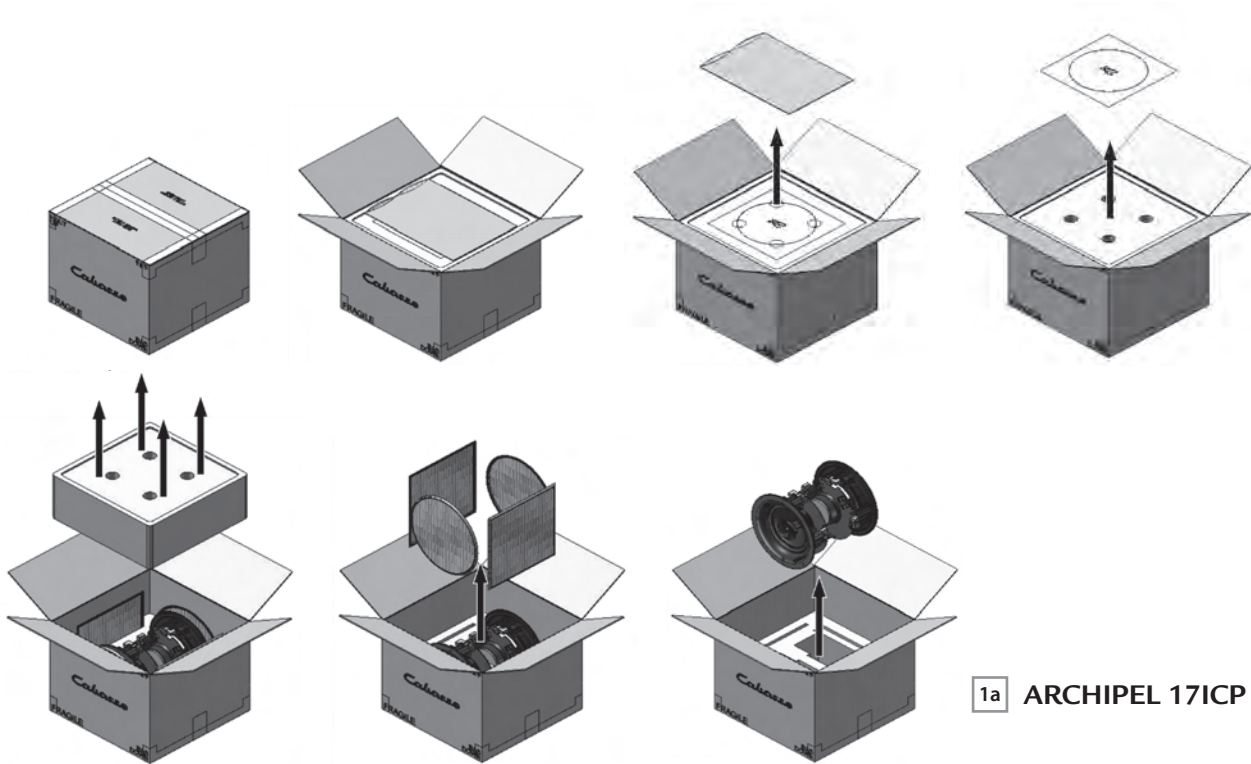
ARCHIPEL 17ICPS



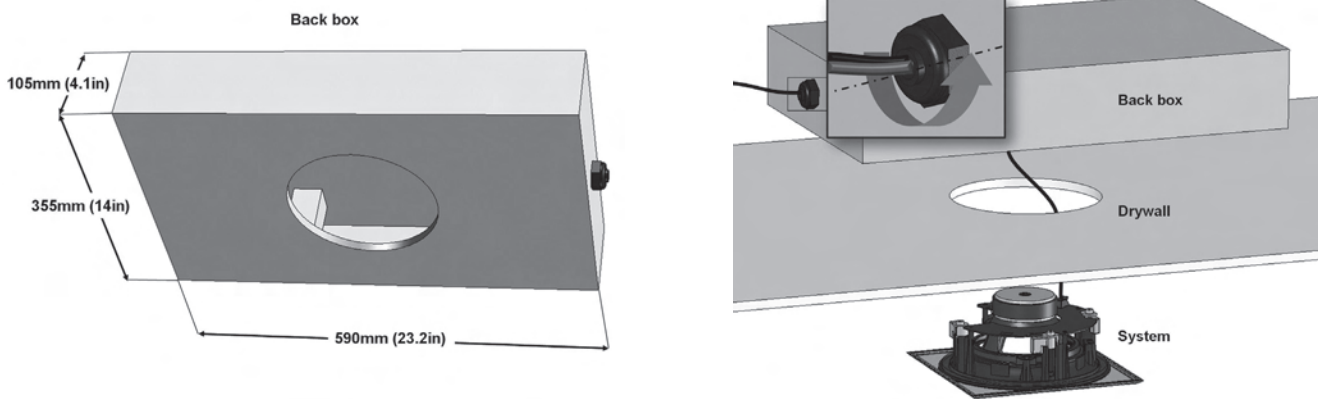
ARCHIPEL 17ICD

***Cabasse***

[www.cabasse.com](http://www.cabasse.com)

**① DEBALLAGE - UNPACKING - AUSPACKEN**

## ② OPTION ENCEINTE ARRIERE - BACK BOX OPTION - BACK BOX ZUSATZAUSSTATTUNG

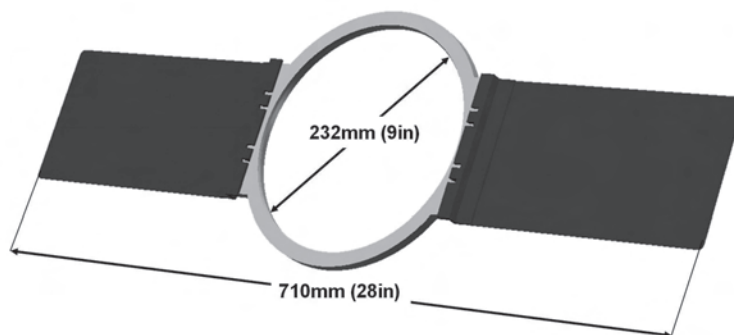


L'option «enceinte arrière» garantit le bon fonctionnement des ensembles Archipels. Le volume de charge clos est optimisé pour ces modèles, l'enceinte est réalisée en MDF hydrofuge. Le concours d'un professionnel est fortement conseillé pour un résultat et un fini optimum.

The use of the back box option guarantees best use of the Archipel speakers. The damp proof MDF closed enclosure offers optimal loading volume. We advise install to be made by a professional for best result and finish.

Die Back Box Zusatzausstattung garantiert das ideale Funktionieren der Archipel-Lautsprecher. Das geschlossene Ladevolumen dieser Box aus wasserabweisendem MDF ist optimal an diese Modelle angepasst. Für ein optimales Resultat sollte die Installierung von einem Fachmann durchgeführt werden.

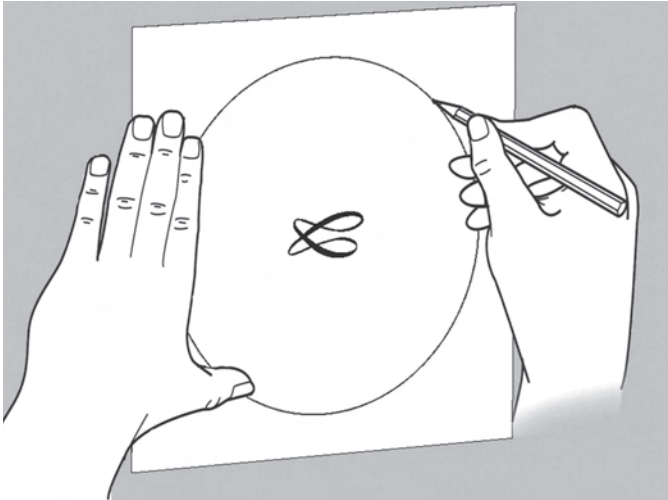
## ③ OPTION KIT D'INSTALLATION - MOUNTING KIT OPTION - EINBAU KIT ZUSATZAUSSTATTUNG



Ce kit facilite l'installation des enceintes Archipels lors d'une construction nouvelle pour des parois en plaques de plâtre ou équivalent. Le concours d'un professionnel est fortement conseillé pour un résultat et un fini optimum.

This kit eases the mounting of the Archipel speakers for a new construction, especially on drywalls. We advise install to be made by a professional for best result and finish.

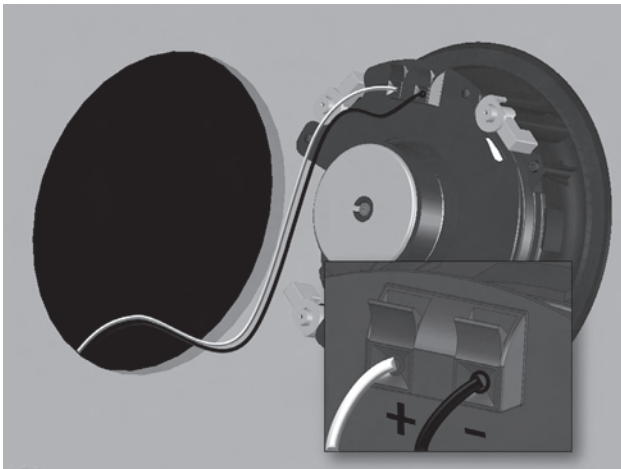
Dieses Einbaukit erleichtert die Installierung der Archipel-Lautsprecher bei einem Neubau, besonders bei Riegipsplatten oder ähnlichem. Für ein optimales Resultat sollte die Installierung von einem Fachmann durchgeführt werden.

**④ INSTALLATION ET PLACEMENT - SET-UP AND POSITIONNING - AUFSTELLUNG UND EINBAU**

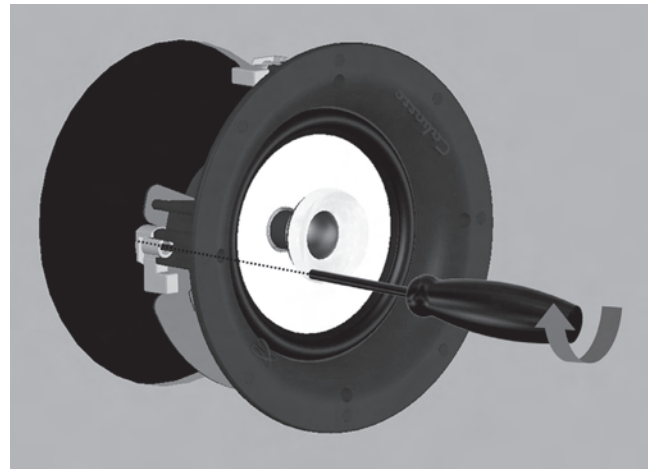
4a



4b



4c



4d



*Thank you very much for choosing Cabasse speakers.  
Please read carefully these instructions before setting up your speakers.*

## SAFETY INSTRUCTIONS



### Explanation of graphical symbols

The lightning flash with arrowhead symbol, within an equilateral triangle, is intended to alert you

to the presence of uninsulated “dangerous voltage” within the product’s enclosure that may be of sufficient magnitude to constitute a risk of electric shock to persons.

The exclamation point within an equilateral triangle is intended to alert you to the presence of important operating and maintenance (servicing) instructions in the literature accompanying the appliance.

**Instructions** - Carefully read through all the safety and operating instructions before switching on any device for the first time.

**Keep these instructions in mind** - They will be constantly referred to through this manual.

**Pay special care to warnings** - All the warning labels on the product or warning notes in the user’s manual must be followed.

**Follow the instructions** - Follow carefully all the installation and operation instructions.

**Cleaning** - Always take off the power cord before cleaning the device. Do not use cleaning solvent, whether liquid or air spray. Using a soft damp cloth is recommended.

**Accessories** - To avoid incidents, only use accessories expressly recommended by Cabasse.

**Water and moisture** - The product shall not be used in damp or wet locations, such as humid basements, next to a bathtub, sink, swimming pool or any other similar conditions.



**Carts and Stands** - The appliance should be used only with a cart or stand that is recommended by the manufacturer.

> *Portable cart warning*

**Installation on a piece of furniture and stands** - Do not place this device on an unsteady surface, i.e. a stand, tripod, table, shelf, etc. It may fall and cause serious injury to a nearby child or adult.

**Ventilation outlets** - The device shall not be placed in a position that restrains the operation of its fans. Avoid installing the device on a bed, couch, blanket or other similar surfaces that may prevent the appropriate air flow. Do not install the device in a confined space, such as a book shelf or other piece of furniture, that could prevent sufficient air from flowing freely.

**Power** - The device shall only be connected to a source of power compliant to the one described in this manual or on relevant printed labels on the product. If you are not sure of the type of power available, please contact your reseller or the local power company.

**Power cords** - The power cords must be laid out in such a way that they cannot be walked on, pinched, bent under other devices. Also pay special attention to the matching of the plugs and the connection of the cord to the device.

**Lightning** - For better protection against lightning or if the device must remain unused for long stretches of time, unplug the power cord and antenna jack. This minimizes potential damages due to lightning or line surges.

**Overloads** - Avoid overloading the power plugs, extension cords or power relays. This could result in fire or electric shocks.

**Foreign bodies and liquids** - Avoid letting foreign materials or liquids enter the device. They could cause fire or electric shocks. Never spill any liquid on the device.

**Maintenance** - Users must never attempt to maintain the device on their own, except for those maintenance operations described in this manual. Any task beyond regular user maintenance must be performed by qualified service operators.

**Troubleshooting** - You must unplug your device from the power supply and have it checked by a qualified technician if:

- The power supply or the plug is damaged.
- Foreign bodies or liquid penetrated the device.
- The device was exposed to dripping or splashing.
- The device does not seem to work correctly under normal operating conditions. Only operate the controls described in this manual. Any other operation could damage the device and require on-site visit of a qualified technician.
- The device has fallen or its housing is damaged.
- The performances of the device are strongly altered.

**Spare parts** - If spare parts are needed to repair the device, make sure that the technician followed the manufacturer’s recommendations or that the replacing parts feature the same specifications as the original ones. Non-compliant parts can result in multiple damages, including fire or electric shocks.

**Checks** - After any servicing of the device, ask the technician to perform appropriate testing to make sure that the device works safely.

**Exposure to high temperatures** - The device should be kept away from heating sources, such as radiators, heaters, amplifiers or any other similar item likely to make the operating temperature rise excessively.

**Plastic bags** - Keep them away from children to prevent any risk of suffocation.

**Applicable for USA, Canada or where approved for usage**

**Caution !** To prevent electric shock, match wide blade plug to wide slot, insert fully.

## UNPACKING ①

After opening the top carton flaps, fold the carton flaps right back and invert the carton contents. Remove the cutting template and the upper foam form, then the grilles followed by the speakers. Keep the grilles away from the work area until you are ready to fit them. We suggest you to retain the packing for future use.

Check the contents of Archipel 17ICP and 17ICD:

- 2 speakers with 1 round and 1 square grille each
- 1 alignment template

Check the contents of Archipel 17ICPS:

- 1 speakers with 1 round grille and 1 square grille
- 1 alignment template

## SET-UP AND POSITIONING ④

Check that there is no conflict with other installations (pipe work, air conditioning, powercabling etc.). In existing construction, use a stud-finding tool to map the construction accurately and a pipe detector to scan the proposed installation position. Avoid installing the speakers in the same cavity as flimsy ducting, which may be induced to rattle. The speakers are designed to operate satisfactorily in a wide range of cavity volumes, ideally above 15 litres (0.53 cu ft). Placement near a wall/ceiling junction or in a corner is to be avoided as it may give rise to too much bass and a boomy quality to the sound. If possible, keep the speakers more than 0.5 m (20 in) from the ceiling edges.

### Damping the wall cavity

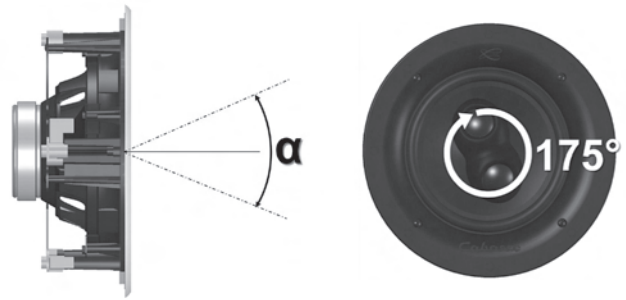
In addition, loosely fill the whole section of the cavity with wadding. Fibreglass and mineral wool matting supplied for heat insulation are suitable, but not closed cell foam or expanded polystyrene. Check that there is no debris that may fall into the speaker (especially in ceiling mount situations).

**IMPORTANT: YOU SHOULD CHECK THAT THE MATERIALS YOU USE MEET THE LOCAL FIRE AND BUILDING REGULATIONS.**

To get the best possible results, we advise you to use the appropriate optional item, either the Cabasse backbox ③ for Archipel 17, or the kit for drywall mounting ④.

### Set-up

- Position the template on the surface as required. Mark around the outside of the template 4a and cut the aperture neatly 4b.
- Connect the speaker cable to the terminals 4c and to the amplifier. Respect the phase.
- Position the frame in the wall or ceiling and screw in the 4 screws visible from the front of the frame 4d. These screws swing out clamping dogs that locate behind the drywall.
- Ensure that they have located properly and tighten the screws. A certain amount of flexing of the frame is allowed to take up unevenness in the mounting surface, but do not over tighten the screws as excessive distortion of the frame may occur.
- Archipel 17ICP and 17ICD: if necessary, swivels the tweeter towards the listening area with a gentle pressure on it's perimeter. Do not touch the dome diaphragm of the tweeter. The



rotation is possible in every direction within an  $\alpha$  angle up to 20° for the 17ICP and 30° for the 17ICD.

- Archipel 17ICPS: if necessary, rotates the group of 2 tweeters to optimize the stereophonic soundstage.
- Position the grille of your choice in front of the speaker. It will automatically be fitted thanks to the magnetic link. It is possible to rotate the grille once fitted.

### Customising

The grille has a paintable white semi-matte finish, ready if necessary to be re-finished to match your own decor.

**ATTENTION: TURN OFF ALL THE AMPLIFIERS BEFORE INTERCONNECTING THEM TO THE LOUDSPEAKERS. IN ORDER TO CONNECT LOUDSPEAKERS PROPERLY, IT IS MOST IMPORTANT TO KEEP IN MIND THE FOLLOWING TWO FACTORS: CABLE SECTION AND PHASE.**

## CONNECTION

### Cable section

To get the full sonic potential of Cabasse loudspeakers and avoid power losses, the cables connecting the speakers to the power amplifier must have the lowest possible electrical resistance. To help you in choosing the correct cable gauge, follow diagram.

### Phase

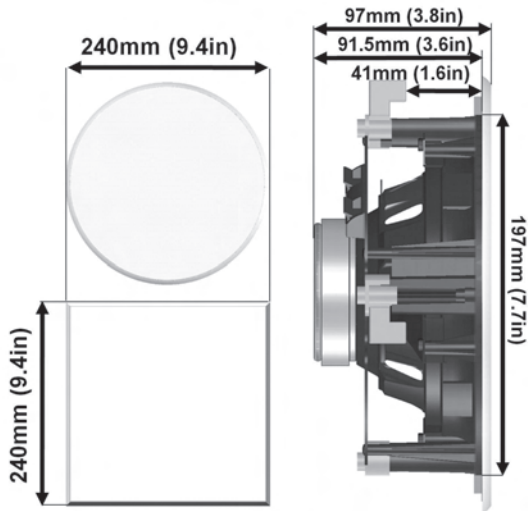
Amplifier and speaker manufacturers typically indicate connection polarity in one of two ways: red and black or plus and minus. In either case, always connect red or plus to red or plus and black or minus to black or minus. Connections should be identical for all channels.

Length between amplifier and loudspeakers	Recommended section
4,5 m	1,5 mm <sup>2</sup>
6 m	2 mm <sup>2</sup>
7,5 m	2,5 mm <sup>2</sup>
9 m	3 mm <sup>2</sup>
12 m	4 mm <sup>2</sup>

## AFTER SALE SERVICE

Cabasse retailers' network is at your disposal to ensure the after sale service of your material. To get the list of Cabasse retailers, contact us or consult our web site [www.cabasse.com](http://www.cabasse.com).

Thanks to the above information, your installation is now nicely set up and we hope you will enjoy your speaker system for many years. We receive every day letters from customers expressing the ever growing satisfaction and musical emotion they have been getting with our speakers over the years. These letters are our first motivation.



## ARCHIPEL 17ICP SPECIFICATIONS

**Use:** in ceiling / in wall

**Ways:** 2

**Drivers:**

- 1 x DOM24 pivoting tweeter - soft dome membrane
- 1 x 17T15 IC midrange-woofer - P2C diaphragm

**Cross-over point:** 3,500 Hz

**Frequency response:** 48 Hz - 21,500 Hz

**Sensitivity 1 W / 1 m:** 87.5 dB

**Nominal impedance:** 8 ohms

**Minimum Impedance:** 8.3 ohms

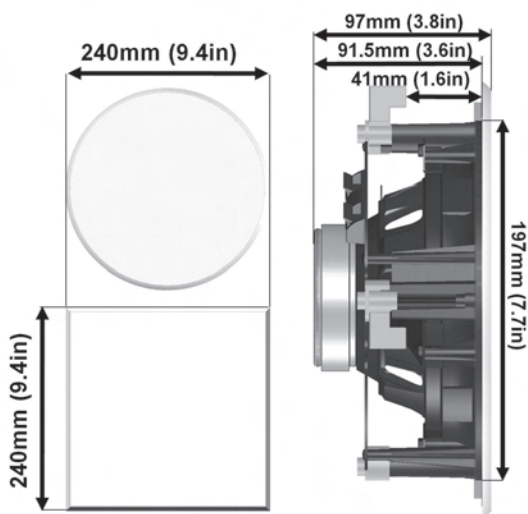
**Power handling:** 35 W

**Peak power:** 280 W

**Dimensions (H x W x D):** 24 x 24 x 9.7 cm - 9.4 x 9.4 x 3.8 in

**Weight:** 1.3 kg - 3 lbs

**Standard finish:** white (paintable grill)



## ARCHIPEL 17ICPS SPECIFICATIONS (Stereo system)

**Use:** in ceiling / in wall

**Ways:** 2

**Drivers:**

- 2 x DOM24 tweeter on a rotating base - soft dome membrane
- 1 x 17T15 IC midrange-woofer - P2C diaphragm

**Cross-over point:** 3,200 Hz

**Frequency response:** 40 Hz - 19,000 Hz

**Sensitivity 1 W / 1 m:** 84 dB

**Nominal impedance:** 8 ohms

**Minimum Impedance:** 6.4 ohms

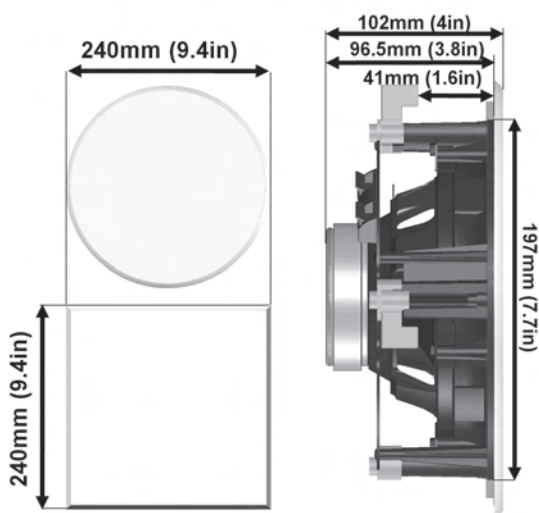
**Power handling:** 2 x 20 W

**Peak power:** 2 x 160 W

**Dimensions (H x W x D):** 24 x 24 x 9.7 cm - 9.4 x 9.4 x 3.8 in

**Weight:** 1.5 kg - 3.3 lbs

**Standard finish:** white (paintable grill)



## ARCHIPEL 17ICD SPECIFICATIONS

**Use:** in ceiling / in wall

**Ways:** 2

**Drivers:**

- 1 x DOM25 pivoting tweeter - Kaladex® dome
- 1 x 17M20 IC midrange-woofer - Duocell diaphragm

**Cross-over point:** 2,600 Hz

**Frequency response:** 58 Hz - 22,000 Hz

**Sensitivity 1 W / 1 m:** 87.5 dB

**Nominal impedance:** 8 ohms

**Minimum Impedance:** 7.2 ohms

**Power handling:** 40 W

**Peak power:** 320 W

**Dimensions (H x W x D) :** 24 x 24 x 10.2 cm - 9.4 x 9.4 x 4 in

**Weight:** 1.6 kg - 3.5 lbs

**Standard finish:** white (paintable grill)



**MARQUAGE DEEE****Traitement des appareils électriques et électroniques en fin de vie (applicable dans les pays de l'Union européenne).**

Ce symbole, représentant une poubelle sur roues barrée d'une croix, apposé sur le produit, indique que ce produit ne doit pas être traité avec les déchets ménagers.

Il doit être remis à un point de collecte pour le traitement des équipements électriques et électroniques en fin de vie. En s'assurant que ce produit est bien mis au rebut de manière appropriée, vous aiderez à prévenir les conséquences négatives potentielles pour l'environnement et la santé humaine.

Le recyclage des matériaux aidera à conserver les ressources naturelles. Pour toute information supplémentaire au sujet du recyclage de ce produit, vous pouvez contacter votre municipalité, votre déchetterie ou le magasin où vous avez acheté le produit.

**WEEE MARK****Disposal of Wastes of Electrical & Electronic Equipment (Applicable in the European Union)**

This symbol on the product, consisting of the crossed-out wheeled bin, indicates that this product shall not be treated as household waste. Instead it shall be handed over to the applicable collection point for the disposal of electrical and electronic equipment at the end of life.

By ensuring this product is disposed of correctly, you will help prevent potential negative consequences for the environment and human health, which could otherwise be caused by inappropriate waste handling of this product. The recycling of materials will help to preserve natural resources. For more detailed information about recycling of this product, please contact your local city office, your household waste disposal service or the shop where you purchased the product.

**WEEE KENNZEICHNUNG****Behandlung der Elektro- und Elektronik-Altgeräte (Verwendbar in die Europäische Union)**

Dieses Symbol, das eine durchgestrichene Abfalltonne auf Rädern darstellt, ist auf dem Produkt angebracht und bedeutet, dass dieses Produkt nicht als unsortierten Siedlungsabfall zu beseitigen ist.

Es muss in eine Sammlungspunkt für die Behandlung von Elektro- und Elektronik-Altgeräte eingerichtet sein. Versichernd, dass dieses Produkt auf geeignete Weise beseitigt ist, Sie werden helfen, die potentiellen negativen Folgen für die Umwelt und die Humangesundheit vorzubeugen. Recycling von Baustoffe wird helfen, die Bodenschätzen zu bewahren. Für jede zusätzliche Information bezüglich des Recyclings dieses Produktes können Sie mit Ihrer Stadtverwaltung, Ihrer öffentliche Rücknamestelle oder dem Geschäft kontaktieren, wo Sie das Produkt gekauft haben.



***Cabasse***

Cabasse SA - 210, rue René Descartes - BP 10 - 29280 Plouzané  
Tel +33 (0)2 98 05 88 88 - Fax +33 (0)2 98 05 88 99  
[www.cabasse.com](http://www.cabasse.com)