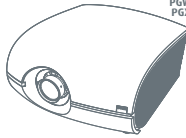


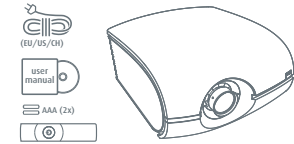
Congratulations on purchasing this product

PGWU-61B
PGWX-61B
PGXG-61B

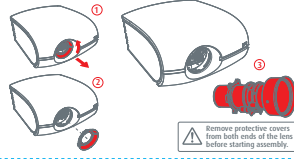


BRUNNEN Quick Setup Guide

1 Packaging Contents

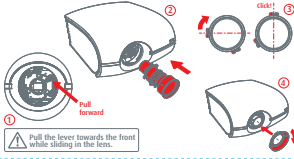


2 Lens Assembly A



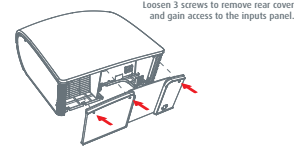
Remove protective covers from both ends of the lens before starting assembly.

3 Lens Assembly B



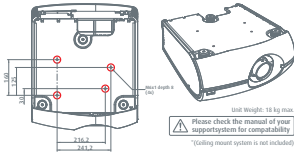
Pull the lever towards the front while sliding in the lens.

4 Rear Cover



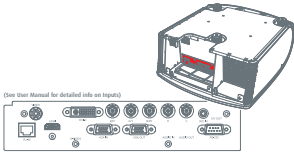
Loosen 3 screws to remove rear cover and gain access to the inputs panel.

5 Ceiling Mount



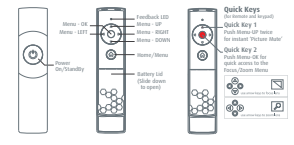
Unit Weight: 18 kg max
Please check the manual of your support system for compatibility.
*Ceiling mount system is not included.

6 Input Cables



See User Manual for detailed info on inputs.

7 Remote Control

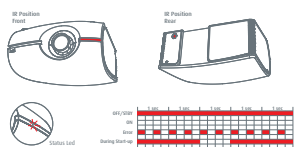


Quick Keys
 - Home: OK
 - Previous/Next: LEFT/RIGHT
 - Power: Power
 - On/Standby: On/Standby
 - Battery LED (LEDs blink to indicate)

Quick Key 1
 - Press Home/Off button for instant Picture Mode!

Quick Key 2
 - Press Menu/Off for quick access to the Home Screen Menu.

8 Starting Projector



9 OSD Lite Menu



10 Important Info

Remove the lens before transporting the projector.
 - To save lamp lifetime, first switch the projector to standby mode and wait two minutes, then switch off the main power.
 - Ensure that the projector is operating with clean filters.
 - Do not block the ventilation in- and outlets.
 - Using the projector at a non recommended tilt angle will reduce the lifetime of the lamps or cause unexpected behavior of the unit.
 - Laser light can cause severe damage to the DMD. This damage is not covered by warranty.

For more information and Maintenance Guidelines, check the Detailed User Manual on: <http://www.brunnen.com/en/products-solutions/projectors>