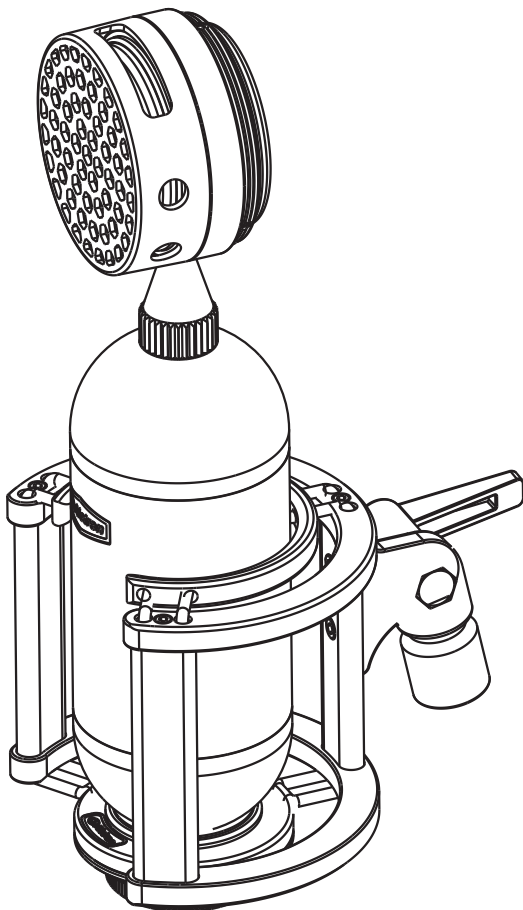


 **Alctron** 爱克创



CX5电容录音麦克风

CX5 CONDENSER RECORDING MICROPHONE

用户手册

Owner's Manual

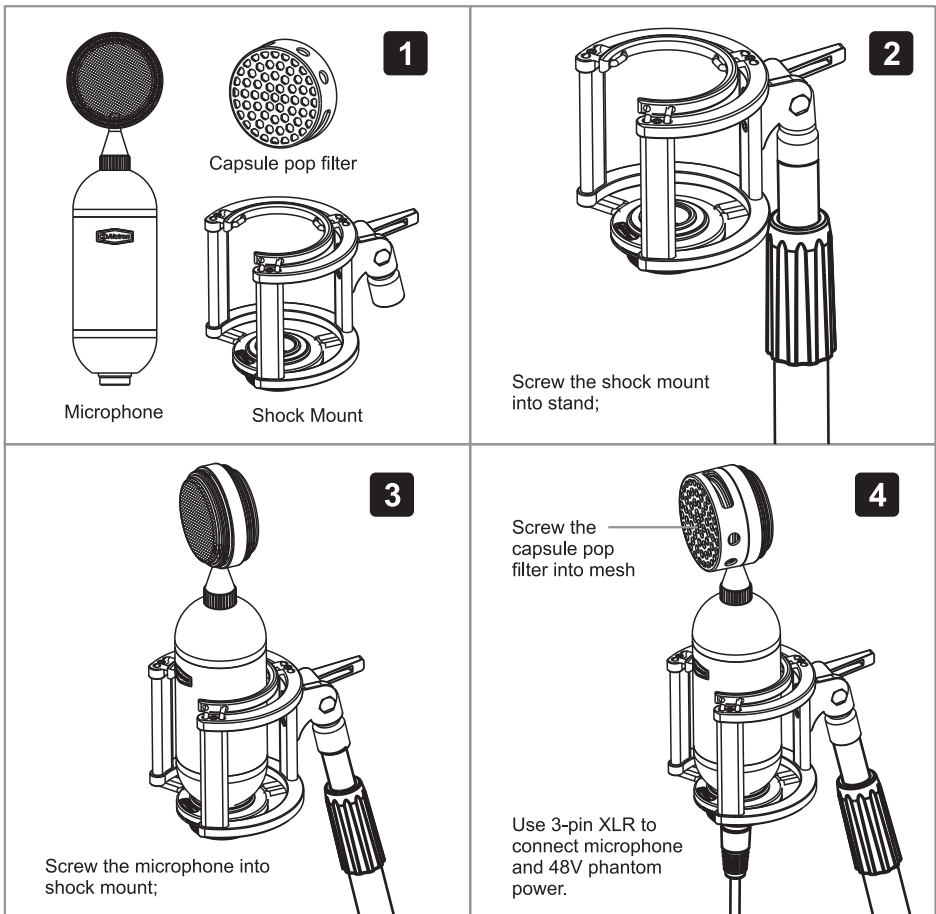
GENERAL DESCRIPTION

CX5 is a condenser recording microphone with cardioids polar pattern. It adopts 34mm large diagram capsule which makes the recording sound more warmth and natural. Mic comes with a plastic capsule pop filter to protect mic from saliva erosion. The shell uses alum alloy and with gold-plating process, the shining yellow color fitting for most young people's taste.

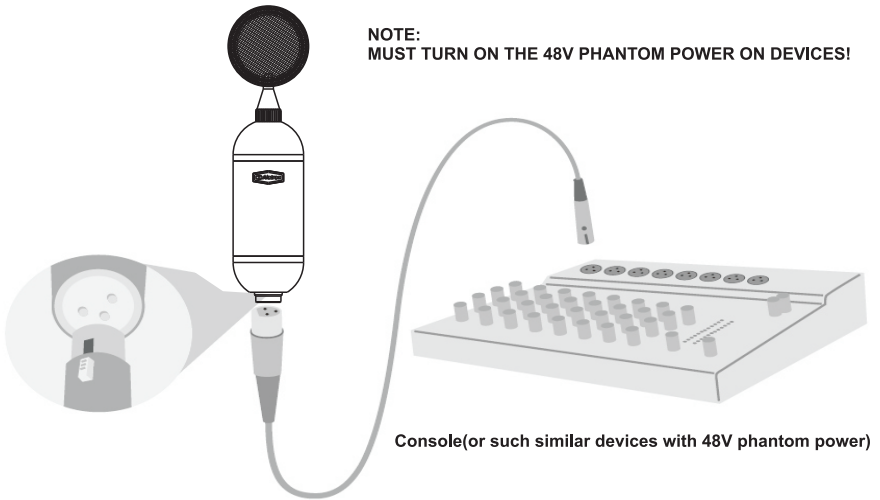
FEATURES

- * Cardioids condenser recording mic;
- * 34mm large diagram capsule;
- * Recording sound more warmth and natural;

HOW TO USE MICROPHONE



XLR CONNECTION



PROXIMITY EFFECT

Unidirectional microphones such as the CX5 progressively boost bass frequencies by 6 to 10 dB below 100 Hz when the microphone is at a distance of about 6 mm (1/4 in.) from the sound source.

This phenomenon, known as proximity effect, can be used to create a warmer, more powerful sound.

| APPLICATION | SUGGESTED MICROPHONE PLACEMENT | TONE QUALITY |
|--------------------------|--|--|
| Vocals | Lips less than 15 cm (6 in.) away or touching the windscreen, on axis to microphone. | Robust sound, emphasized bass, maximum isolation from other sources. |
| | 15 to 60 cm (6 in. to 2 ft.) away from mouth, just above nose height. | Natural sound, reduced bass. |
| | 20 to 60 cm (8 in. to 2 ft.) away from mouth, slightly off to one side. | Natural sound, reduced bass and minimal "s" sounds. |
| | 90 cm to 1.8 m (3 to 6 ft.) Away. | Thinner, distant sound; noticeable levels of ambient noise. |
| Guitar & Bass Amplifiers | 2.5 cm (1 in.) from speaker, on-axis with center of speaker cone. | Sharp attack; emphasized bass. |
| | 2.5 cm (1 in.) from speaker, at edge of speaker cone. | Sharp attack; higher frequency sound. |
| | 15 to 30 cm (6 to 12 in.) away from speaker and on-axis with speaker cone. | Medium attack; full, balanced sound. |
| | 60 to 90 cm (2 to 3 ft.) back from speaker, on-axis with speaker cone. | Softer attack; reduced bass. |

GENERAL RULES FOR USE

Aim the microphone toward the desired sound source (such as the talker, singer, or instrument) and away from unwanted sources.

Place the microphone as close as practical to the desired sound source.

Work close to the microphone for extra bass response.

Use only one microphone to pick up a single sound source.

Use the fewest number of microphones as practical.

Keep the distance between microphones at least three times the distance from each microphone to its source.

Place microphones as far as possible from reflective surfaces.

Add a windscreen when using the microphone outdoors.

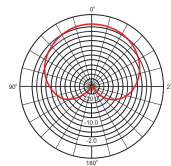
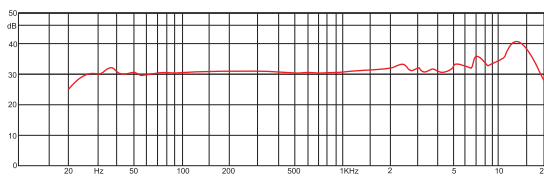
Avoid excessive handling to minimize pickup of mechanical noise and vibration.

Do not cover any part of the microphone grille with your hand, as this will adversely affect microphone performance.

TECHNICAL SPECIFICATIONS

| | |
|---------------------------|----------------------------|
| * Polar pattern: | Cardioid |
| * Capsule: | 34mm large gold diaphragms |
| * Frequency range: | 20Hz-20kHz |
| * Output impedance: | 100ohms |
| * Equivalent noise ratio: | 16dB |
| * Max SPL: | 137dB |
| * Sensitivity: | -38dB \pm 3dB |
| * Connector: | 3-pin XLR |
| * Power requirement: | 48V phantom power |

THE FREQUENCY RESPONSE CURVES AND THE POLAR DIAGRAM



Cardioid at 1KHz

* **Cardioid**—When this pattern is selected, the microphone picks up sounds directly in front of the microphone and is least sensitive to those in back. This is the most commonly used pattern in studio recording and live-sound applications.

⚠ CAUTION

* Do not store the microphone under direct sunlight, near heating devices or in a hot, humid or dusty place. Do not allow the microphone to get wet;

* Do not install near any heat sources such as radiators, heat registers, stoves, or other apparatus (including amplifiers) that produce heat;

* Do not subject the microphone to strong impact;

* Do not disassemble, modify or attempt to repair the microphone;

* Clean only with dry cloth;

* When this product is used for a long time, the microphone may become discolored due to ultraviolet light (especially direct sunlight) or wear.

Copyright © Ningbo Alctron Electronics Technology CO.,LTD. All rights reserved. Specifications and appearance subject to change without notice.

Ningbo Alctron Electronics Technology CO.,LTD.

No.76 SanCheng Road, XiuFeng Industrial Area,GaoQiao Town,NingBo, China.

Tel:+0086 574 87150672

Fax:+86 574 87157176

E-mail:info@alctron-audio.com

www.alctron-audio.com

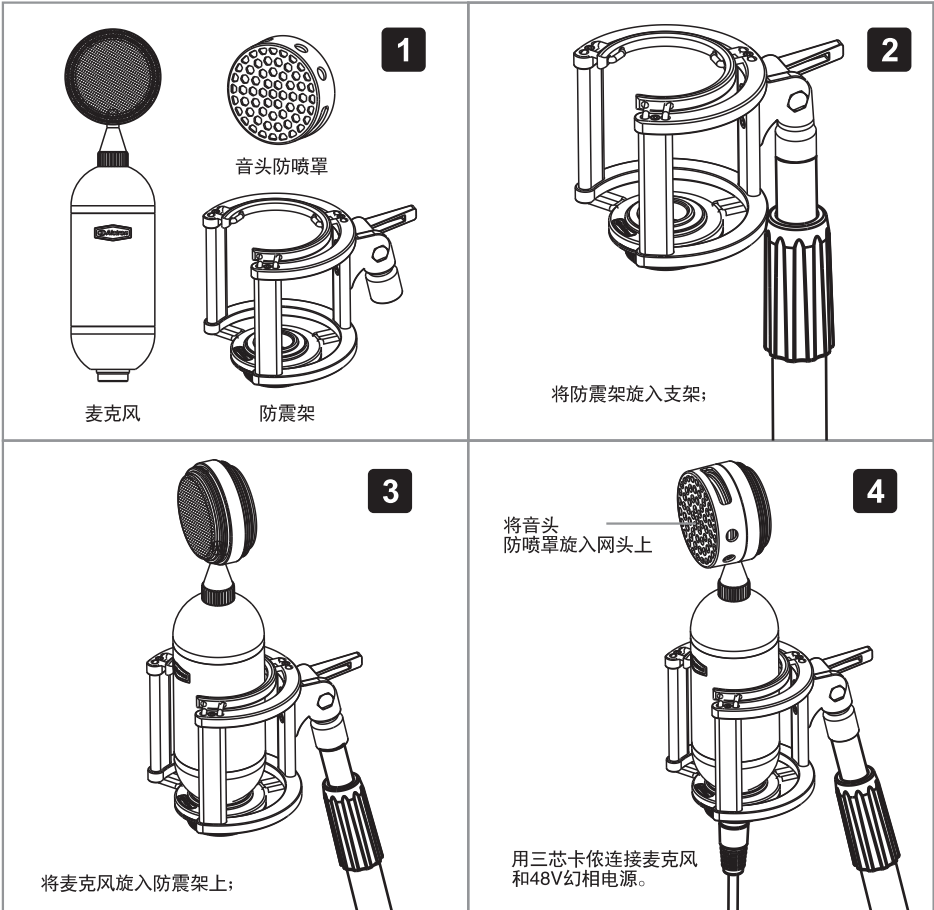
产品介绍

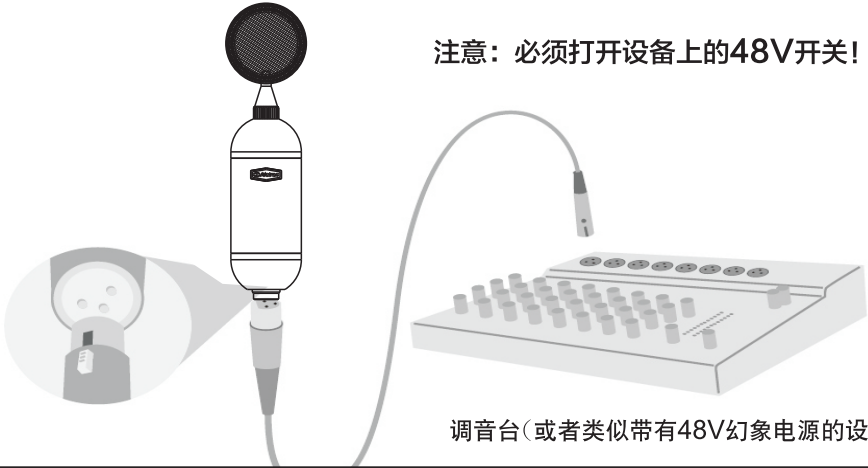
CX5是一款心型电容录音麦克风。此款麦克风采用了34mm大振膜音头，能够确保在录音的音质更加的温暖柔和，自然。CX5自带音头塑料材质的防喷罩，能使麦克风在录制的过程中减少来自口水的侵蚀作用。铝合金的壳身，亮黄色的喷漆工艺更符合现代大多数年轻人的喜好。

特征

- * 心型电容录音麦克风；
- * 34mm大振膜音头；
- * 录音的音质更加的温暖柔和，自然。

如何使用麦克风





注意：必须打开设备上的48V开关!

调音台(或者类似带有48V幻象电源的设备)

近讲效应

当话筒与声源之间的距离在6毫米(1/4英寸)左右时,像CX5这样的指向性的话筒会将100Hz以下的低频提升6-10dB,这个现象被称之为“近讲效应”,在录音时,常会被用来创造一种更加温暖,更加厚重的音色效果。

| 运用 | 建议话筒放置位置 | 音质 |
|--------------|--|--------------------------|
| 人声 | 嘴与防风罩的距离少于15厘米(6英寸),或轻触防尘罩,在话筒轴线上。 | 饱满、加重低音、最大程度隔离其它声源。 |
| | 与嘴的距离为15至60厘米(6英寸至2英尺),刚好在鼻子平面上面。 | 自然,减弱低音。 |
| | 与嘴的距离为20至60厘米(8英寸至2英尺),稍微偏向一侧。 | 自然、减弱低音和"s"声。 |
| | 距离90厘米至1.8米(3至6英尺) | 薄的远距离声音; 可听见不同程度的环境声。 |
| 电吉他 电贝司音箱 | 与扬声器的距离为2.5厘米(1英寸),在话筒轴线上扬声器锥盆范围内。 | 音头锐利;低频突出。 |
| | 与扬声器的距离为2.5厘米(1英寸),在扬声器锥盆边缘。 | 音头锐利;低频突出。 |
| | 离扬声器15至30厘米(6至12英寸),在话筒轴线上扬声器锥盆范围内。 | 音头平和;完整的平衡声。 |
| | 与扬声器的距离为60至90厘米(2至3英尺),在话筒轴线上扬声器锥盆范围内。 | 音头柔软;低频减弱。 |

一般使用规则

将话筒对准所录制的声源（例如谈话者、唱歌者或乐器），远离其他声源。

尽可能靠近所录制声源摆放。

如果想获得更多的低频响应，可将话筒进一步靠近音源。

只使用一个话筒来拾取单个声源。

尽可能减少使用话筒的数量。

保持话筒之间的距离，使其至少三倍于每个话筒与其声源之间的距离。

将话筒放置在尽可能远离反射表面的地方。

在户外使用话筒时，加一个防风罩。

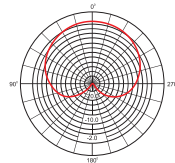
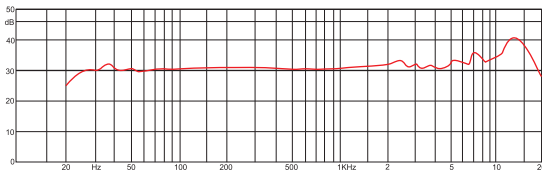
避免过多触摸，以便将机械噪声的拾取和震动降低到最低水平。

切勿用手遮盖住话筒滤网的任何部位，因为这会影响话筒的性能。

产品参数

- * 指向性: 心型
- * 音头: 34mm镀金大振膜
- * 频响: 20Hz-20kHz
- * 输出阻抗: 100ohms
- * 等效噪音级: 16dB
- * 最大声压级: 137dB
- * 灵敏度: -38dB±3dB
- * 接头: 3针卡侬
- * 电源要求: 48V幻象电源

频响曲线图



Cardioid at 1KHz

* 心型—当您选择这个模式时，麦克风拾音的方向是在前面，后面几乎收不到声音。这种模式经常用在工作室录音和现场录音。

安全事项

- * 请勿将麦克风存放在阳光直射下、暖气设备附近或湿热或多尘的地方；
- * 请勿将本产品安装在热源附近，如暖气片，炉子或者其它产生热量的设备（包括功放器）；
- * 请勿使麦克风受到强烈撞击；
- * 请勿拆卸或改造麦克风；
- * 请用干布清洁本产品；
- * 长时间使用本产品时，麦克风部分可能会因紫外线（特别是阳光直射）或磨损而变色。

版权所有©宁波奥创电子科技有限公司,所有权保留。必要的技术数据和外观更改恕不另行通知。

宁波奥创电子科技有限公司

地址：浙江省宁波市海曙区秀丰工业区三成路76号

电话：0574-88011699

传真：0574-87157176

邮箱：sales@alctron-audio.com

网址：<http://www.alctron-audio.com> 全国统一服务热线：4000-160-112