



Scan for full manual

## TBUS-20XL(WAVES) Quick Start Guide

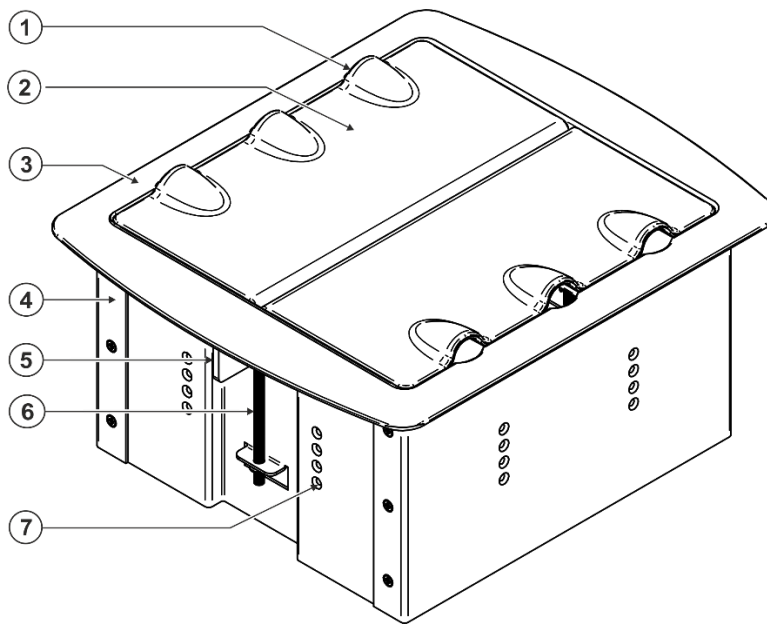
This guide helps you install and use your TBUS-20XL(WAVES) for the first time.

Go to [www.kramerav.com/manual/TBUS-20XL\(WAVES\)](http://www.kramerav.com/manual/TBUS-20XL(WAVES)) to download the latest user manual

### Step 1: Check what's in the box

- ✓ TBUS-20XL(WAVES) Table Connection Bus
- ✓ 1 Metal cut-out template
- ✓ 1 Quick start guide

### Step 2: Get to know your TBUS-20XL(WAVES)



#	Feature	Function
1	Cable Openings (x6)	Pass cables through the wave-shaped openings.
2	Lid (x2)	Open the two lids towards the center of the device.
3	Outer Rim with 8 Embedded Magnets.	Once the housing is installed in the table, place the cover so that the rim magnets connect to the housing edge and the rim fits over the table surface.
4	TBUS Housing	Fit inside a table (or other surface).
5	Latch Bracket (x2)	Tighten to secure the unit to the table's surface.
6	Mounting Screws (x2)	Use to secure the TBUS-20XL(WAVES) to the table.
7	Inner Frame Height Adjustment Screw Holes	Use to adjust the height of the mounted inner frame.

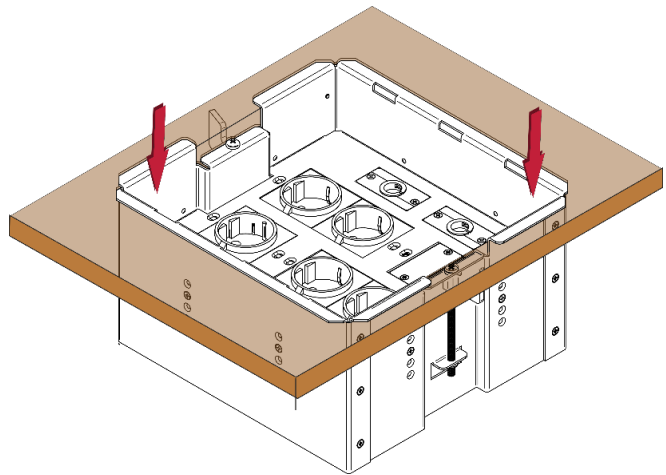
## Step 3: Install the TBUS-20XL(WAVES)

1. Cut an opening in the table using the metal cut-out template. Before cutting check the latest cut-out dimensions from the Kramer website at [www.kramerav.com/downloads/TBUS-20XL\(WAVES\)](http://www.kramerav.com/downloads/TBUS-20XL(WAVES)):
  - Place the cut-out template on the surface of the table exactly where you want to install the **TBUS-20XL(WAVES)**.
  - Attach the cut-out template to the table with the included screws.
  - Following the **inside** edge of the template, cut a hole in the table surface with a sabre or keyhole saw according to the dimensions.
  - Unscrew and remove the template from the surface of the table and clean the table surface.Take care not to damage the table. If needed, you can download a full-scale template from the Kramer website at [www.kramerav.com/downloads/TBUS-20XL\(WAVES\)](http://www.kramerav.com/downloads/TBUS-20XL(WAVES)).



Take care not to damage the table. Kramer Electronics is not responsible for any damage caused to the table.

2. Make sure that:
  - All the inserts are mounted onto the inner frame, as required.
  - The inner frame is correctly installed inside the **TBUS-20XL(WAVES)** housing.
  - The **TBUS-20XL(WAVES)** lid is off.
3. Carefully insert **TBUS-20XL(WAVES)** into the cut-out opening (with lid removed).
4. Screw the mounting screws on both sides of the housing until both latch brackets are tightened against the surface from underneath.
5. Connect the cables and power sockets from under the table.
6. Place the lid over the housing (the magnets attach to the rim of the housing).



**TBUS-20XL(WAVES)** is ready to use.

